



Operating Room Solutions

# CuratOR<sup>®</sup> PRODUCTS

EN



EXPERIENCE THE FUTURE OF  
OPERATING ROOM TECHNOLOGY

# Making Each Life Visual

Every life is unique. Every person's medical treatment should be tailored to meet their individual needs.

In the age of precision medicine, the possibilities offered by biotechnologies, artificial intelligence, and information technology open up completely new avenues for diagnosis, prevention, and treatment.

Precision requires comprehensive information. Collecting, linking, and analyzing data, as well as recording, storing, and evaluating image data therefore represents a critical resource for modern medical practices.

Faster treatment success, better quality of life: Technical innovation has an immediate impact on the medical processes in hospitals and operating rooms. Which is why we employ all of our experience and work together with highly qualified medical teams to produce reliable systems for processing image data in the age of precision medicine.

Our knowledge is in the service of better health. Every life is worth it.

Making Each Life Visual.

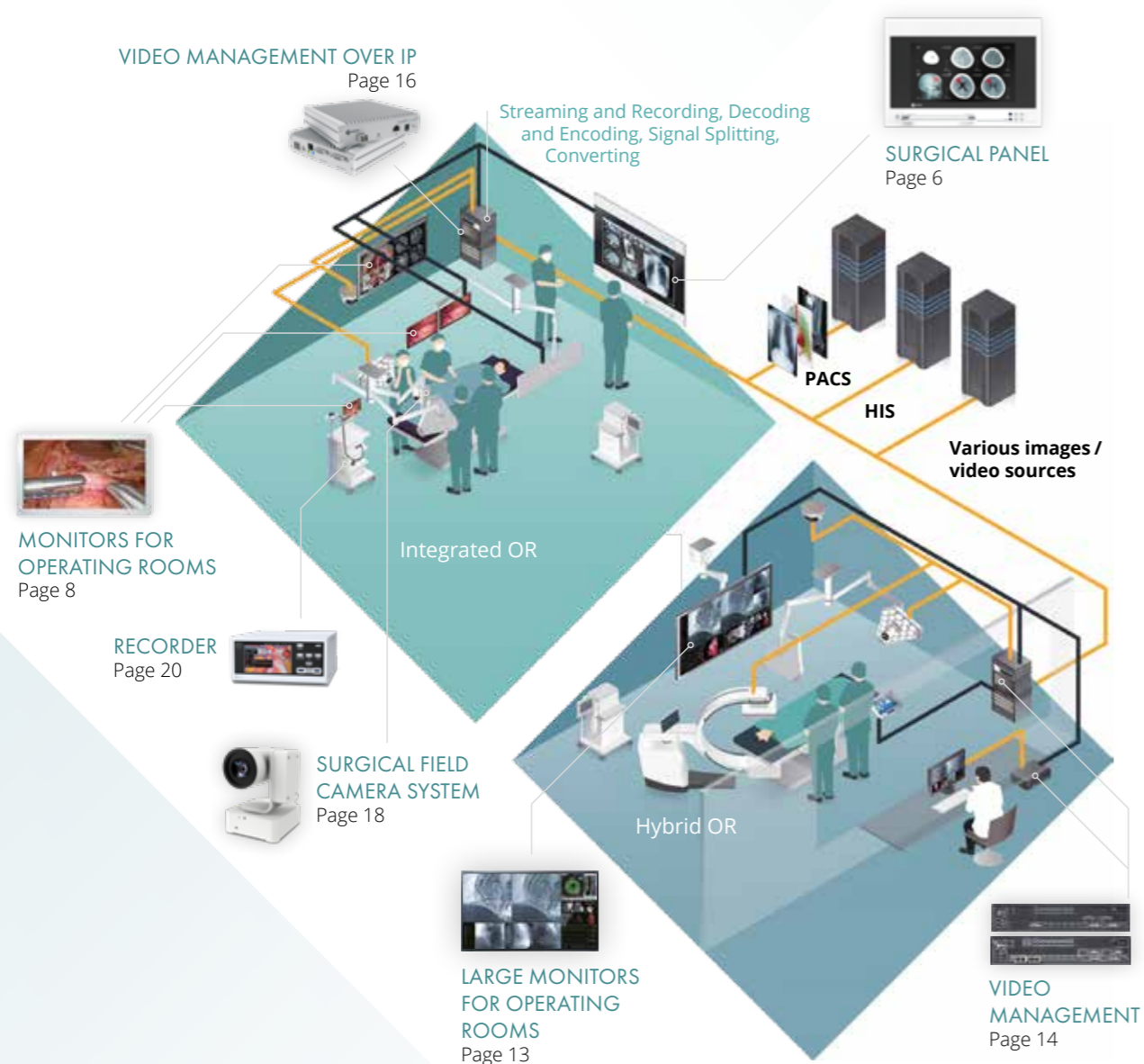


FLEXIBLE. INTELLIGENT. EXPANDABLE.

# OR SYSTEM SOLUTIONS FOR THE OPERATING ROOM

High-performance technology for image reproduction and video management in the OR meets expertise and experience. Designed for scalability and extensibility, EIZO develops visual solutions specifically for the requirements and workflow in the OR. EIZO CuratOR addresses the needs of surgeons, surgical teams and hospital technology. Specializing in the challenges of medical practice in the 21st century.

- Precise image representation for demanding requirements
- Modular system components for customized solutions
- Seamless integration in hospital IT and documentation systems
- Providing information and image data where needed



## A MODULAR SYSTEM FOR EVERY APPLICATION SCENARIO

From a simple workstation to a complex multiroom installation: with its modular design, EIZO CuratOR supports a wide variety of requirements and is almost infinitely expandable.

### The OR Workstation

Central unit for all image and video signals: the Surgical Panel with built-in EIZO monitor and powerful PC. Whether simple image display or central working and operating station – thanks to different expansion options, the Surgical Panel is the flexible basis of an EIZO CuratOR solution.

### Effective Video Management

Image viewing at the press of a button: EIZO's video management solutions support the workflow in the OR. Adapted to the needs of OR staff, CuratOR video management allows you to manage various situations in the OR.

### Interfaces to OR Documentation (HIS/RIS/PACS)

HIS, RIS and PACS systems can be incorporated via existing interfaces. Effortless integration into hospital IT, for example, reduces the amount of documentation required and supports education, validation and process analysis. Flexible, intuitive, personalized.

### Video Management Over IP

With CuratOR Alipe, EIZO provides a powerful way for network-based transmission of video, audio, and control data. Uncompressed and in real time.

### Multiroom Solutions

Whether for documentation or teaching purposes – EIZO CuratOR can be expanded as required and enables the networking and communication throughout different rooms, even over long distances.

### Complete Solution for Visualization in the OR

With a camera for capturing the operation field, surgical monitor for displaying medical images and a recorder for archiving, EIZO offers hospitals a complete solution for visualization in the OR. This Imaging Chain provides high quality and reliable capture, display, and recording of surgical procedures.



## SURGICAL PANEL

# CENTRAL UNIT IN THE OPERATING ROOM

### Viewing Station

Modern operating rooms are no longer conceivable without digital image viewing systems. Surgical Panel with integrated large screens provide the surgical team with excellent images even at a greater viewing distance.



In addition to customer-specific configurations, EIZO offers a number of standard Surgical Panel optimized specifically for a range of applications and effective integration into the operating room workflow.

### Nurse Station

These Surgical Panel are fitted with screen sizes that are ideal for work performed by OR nursing staff. The user-friendly configuration was designed with ergonomic head and body positions in mind and offers ideal viewing conditions when interacting with the local OR systems.

### HIS Station

Surgical Panel with two integrated monitors serve as a space-saving combination of work and viewing stations. Different applications can thus be covered from a single device.



In the digital age, X-ray film and analog X-ray light boxes are a thing of the past. Today's digital systems are integrated into the hospital's IT infrastructure and support a wide range of workflows in the operating room.



### Intuitive Touch Operation

Every CuratOR Surgical Panel can be equipped with a touchscreen to facilitate intuitive operation of software in the OR. They are easily operated while wearing gloves for use in sterile environments.

### Optimized View Through Simple LUT Switching

All 4K Surgical Panel are equipped with an easy-access LUT switch as standard. One of the predefined lookup tables can be selected at the simple press of a button. This allows optimal display of various medical images and videos.



### Customized Housing

The housing dimensions of the Surgical Panel can be individually adapted to the conditions in the operating room. In addition, the housing color can be selected from the RAL color palette depending on the color concept on site.



### Wide Ranging Monitor Options

The Surgical Panel are available in a wide range of screen diagonals for flexibly meeting local application requirements. The option to combine a viewing unit with a 24" Full HD HIS workstation also offers a full viewing environment while saving on space.



### Flexible Integrated Video Management VMbasic

A modular interior design enables customer-specific configuration. Every 4K Surgical Panel can be optionally equipped with the video management function VMbasic. Easily switch between video signals connected internally or optionally on the front at the simple press of a button. Two further buttons allow the selection of the preset layouts and the rotation of the video inputs by keeping the active layout.



### Accessories and Connectivity

Surgical Panel have front USB ports as standard for connecting peripheral devices. There is also the option of integrating additional interfaces on the front frame. These can be individually connected to the inputs available in video management.



### OR Integration and Cleanability

With its flat surface, the Surgical Panel can be completely sealed in the front and integrated in the OR wall, ensuring safety and simple cleaning and disinfection procedures. With intelligent heat distribution over the front surface, the units do not require specialized ventilation systems.



### Easy Maintenance and Service

The hinged front allows easy access to the device without complicated disassembly or tools. With its unique locking system, no screws need to be taken out, making maintenance procedures on the installed components simple and efficient.



# MONITORS FOR OPERATING ROOMS

Faithful image reproduction at the highest accuracy allows for precise work in the OR.  
EIZO's endoscopy monitors assist surgeons perfectly in today's sophisticated minimally invasive and open surgical procedures. With the 3D technology, the surgeon can see organs and tissue structures in lifelike effect of depth.



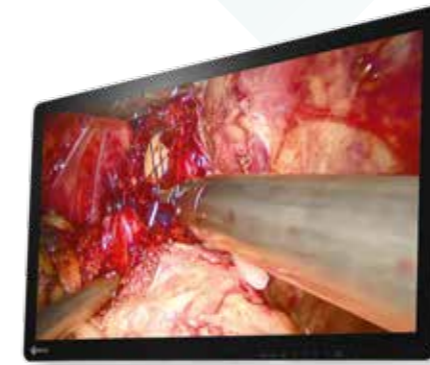
**EX2721**  
27" (68.6 cm) LCD Monitor  
27" WIDE



**EX3220**  
31.5" (80.1 cm) LCD Monitor  
31.5" WIDE



**EX3242**  
32" (81.3 cm) LCD Monitor  
32" WIDE 4K



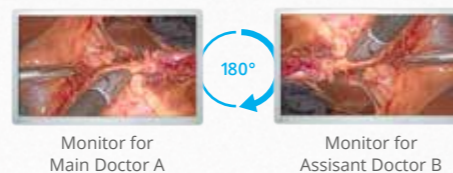
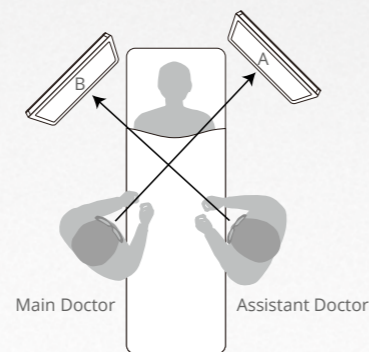
**EX3220-3D**  
31.5" (80.1 cm) LCD Monitor  
31.5" WIDE 3D



**EX3242-3D**  
32" (81.3 cm) LCD Monitor  
32" WIDE 4K 3D

## Fully Flat Design for Safety and Hygiene

In consideration for safety, EIZO's surgical monitors adopt rounded corners. Furthermore the front is covered with a fully flat protective panel that protects against foreign material and splashes to a level of IP45 (whole monitor has IP32 rating). Additionally with the attached cable cover, cables can be stored neatly out of sight, increasing safety and hygiene in the operating room.

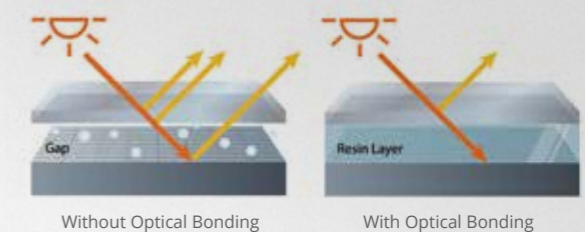


## 180° Rotation and Mirroring

Regardless of the orientation of the surgical camera, you can rotate the displayed image by 180° or mirror it to find the perfect operating view. This allows you to match the image with the line of sight of surrounding assistants and surgeons, improving convenience in the operating room.

## 3D Surgical Display with High Visibility

With high definition, brightness and contrast ratio, the EX3220-3D, and the EX3242-3D faithfully reproduce 3D surgical images for endoscopy and operation microscope feeds; creating a feeling of depth where stereoscopic imagery is required. They use a polarized system to display 3D images in all formats (Side-by-Side, Line-by-Line, Top & Bottom or SIMUL 3D) with excellent color characteristics and without flicker.

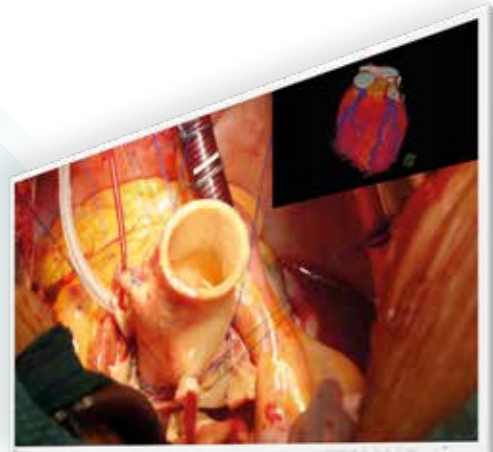


## Reduced Reflections and High Durability

The EX3220-3D, the EX3242-3D and the EX3242 are manufactured with optical bonding. With this technology the air pocket between the LCD panel and external glass is filled by optoelastic resin. This reduces the screen reflections, protects the LCD panel from impacts, dust and moisture, and prevents condensation.

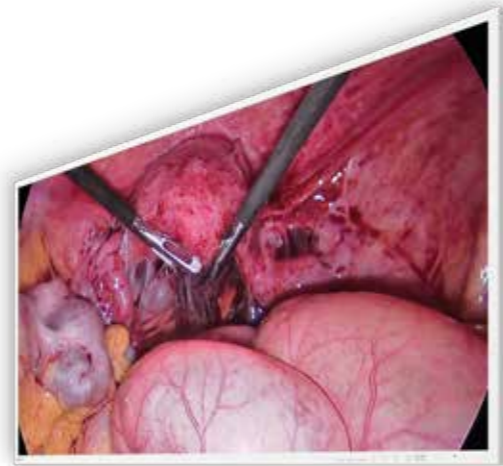
# MONITORS FOR OPERATING ROOMS

Surgical teams in the operating room depend upon the most advanced technologies. Imaging applications have developed to an essential aid. Due to their ultra-high resolution and wide color gamut, EIZO's 4K UHD monitors provide brilliant pictures in completely for a highly detailed view.



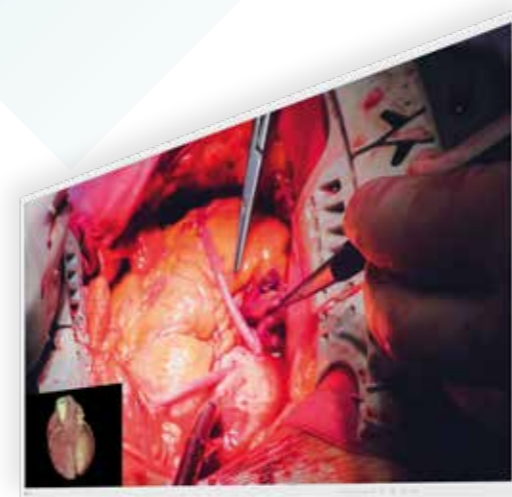
**EX4342**  
43" (109.2 cm) LCD Monitor

43" WIDE 4K



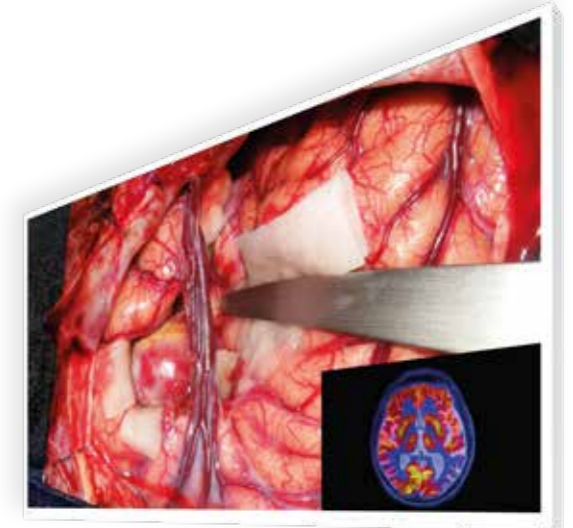
**EX4342-3D**  
43" (109.2 cm) LCD-Monitor

43" WIDE 4K 3D



**EX4942**  
49" (124.5 cm) LCD Monitor

49" WIDE 4K



**EX5542**  
55" (139.7 cm) LCD Monitor

55" WIDE 4K



PinP

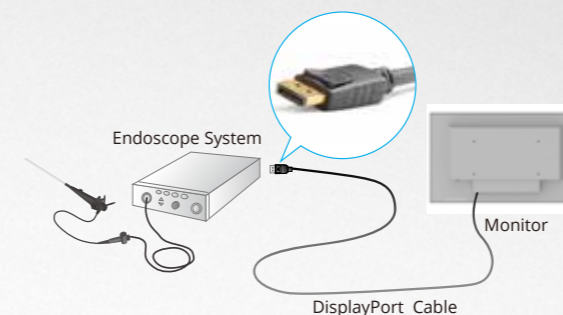
PbyP

## View Two Signals on One Screen

Two different types of signal sources can be viewed simultaneously on one monitor side by side using the PbyP (Picture-by-Picture) or one displayed within an inset window over the other with the PinP (Picture-in-Picture) function. For example, this allows monitoring vitals or ultrasound endoscopes simultaneously in addition to surgical images.

## Lightweight and VESA Mounting

In the OR, largescreen monitors are typically installed on a wall or attached to ceiling fixtures due to their size and weight. The weight of the EX4342 and EX4342-3D of less than 18 kg and compliance with the VESA standard allow it to be reliably attached to supporting medical carts, providing a wide range of flexible installation options to suit the target environment.

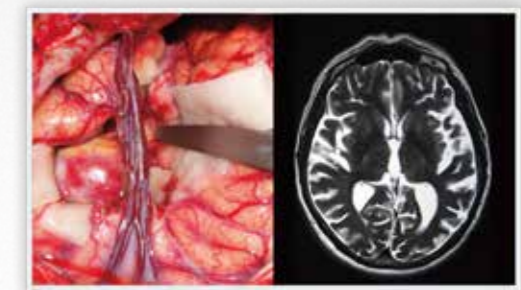


## Streamlined Connectivity

Up to 4K UHD images are displayed at 60 frames per second using BNC (12G-SDI), DisplayPort™ or HDMI®, with one cable over various modalities. When connected via BNC (12G-SDI), stable transmission is achieved even over long distances of 30 meters.

## Adjust Screens Independently from Each Other

When displaying two signal sources side by side on the same screen, each image's display mode (gamma 1.8 – 2.6 or DICOM® Preset Mode) can be adjusted without interfering with the other image. This is ideal for multi-modality use, where both endoscope, CT and MRI images can be accurately displayed on the same monitor.



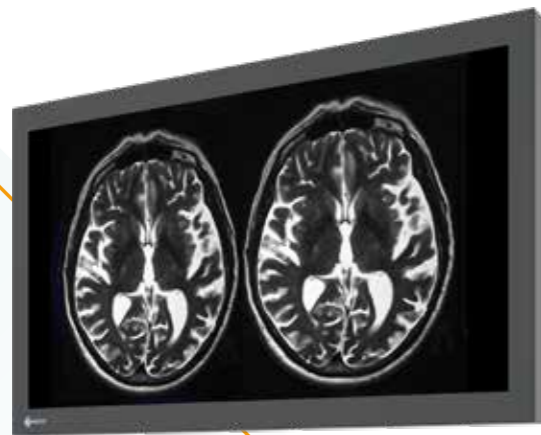
Gamma 2.2

DICOM Preset

DICOM® is the registered trademark of the National Electrical Manufacturers Association for its Standards publications relating to digital communications of medical information.

# MONITORS FOR OPERATING ROOMS

Large screen monitors allow a flexible and clear display of all required image information. The OR monitors from EIZO are additionally equipped with special safety concepts and durable components and therefore offer the best possible comfort for long-term, stable and reliable use in medical environments. Furthermore, they offer consistently precise image reproduction and optimal display quality.



**LX3240-MR**  
31.5" (80 cm) LCD Monitor  
31.5" WIDE 4K



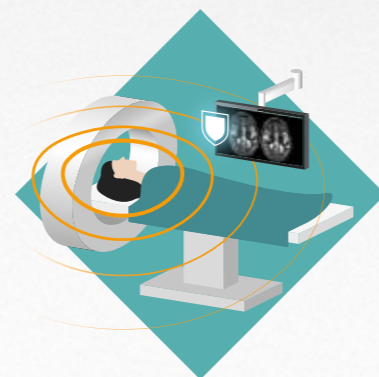
**LX1910**  
19" (48.3 cm) LCD Monitor  
19" WIDE



**LS580W**  
57.5" (146 cm) LCD Monitor  
57.5" WIDE 4K

## Consistent Brightness

The monitors have a fully automatic stability system that keeps the brightness consistent according to medical standards such as DICOM or Gamma 2.2. A built-in light sensor in the backlight ensures the monitor maintains its luminance over time.

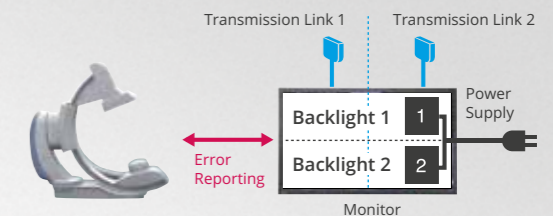
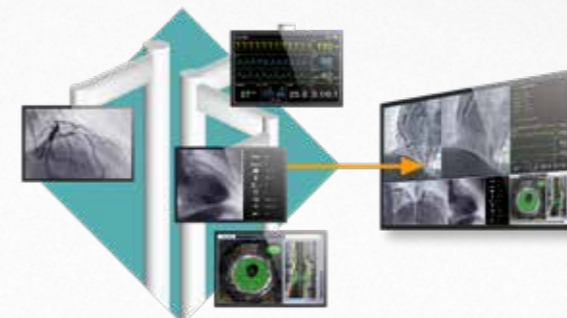


## MRI Compatibility

The LX3240-MR is built using special materials to minimize impact on magnetic fields and resonators. Furthermore the monitor is shielded against strong magnetic environments up to 100 mT, allowing it to be placed in proximity to an MRI scanner.

## Everything in a Single Glance

Compared to solutions with multiple monitors, there are no regional color differences or obtrusive bezels between individual image sections on large screen monitors with high resolution, so that users can conveniently display important information on a single screen.



## Operational Reliability

With its redundant components architecture (2 power supplies, 2 backlights, 2 transmission links), the LS580W ensures a high degree of operational reliability for fail-safe environments. A monitoring function can be configured to notify the imaging system if, for example, operating conditions become critical or a component fails.

# VIDEO MANAGEMENT LARGE MONITOR MANAGER

The Large Monitor Managers gather various video inputs, combine and arrange them in accordance with user preferences, and display the resulting output flexibly on the connected monitors.



**LMM0802-HDM**  
Large Monitor Manager  
12 inputs, 3 x 4K monitors

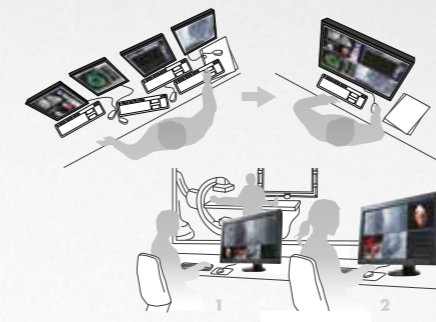


**LMM56800**  
Large Monitor Manager  
26 inputs, 4K monitor



## All Gathered in One to Optimize Workflow

The Large Monitor Managers gather different signal sources and enable you to control them from one location. Users can easily arrange individual image placement and set each window size according to preference for a fully optimized workflow.



## Centralized Working Place

Working with the LMM0802-HDM, the operator can focus on a single monitor, keyboard and mouse instead of juggling with multiple systems. This speeds up workflow and reduces the potential for handling errors. Alternatively, two independent work spaces can be supported when, for example, there is one person responsible for modality information and one person responsible for PACS.

## Local and Remote Control

Layout configuration and layout selection can be performed with a locally attached keyboard and mouse, or via remote browser connected through the web interface. EIZO offers touch screens suitable for the medical environment like the CID1300P to allow users at the surgical table to quickly and conveniently select among the predefined layouts.



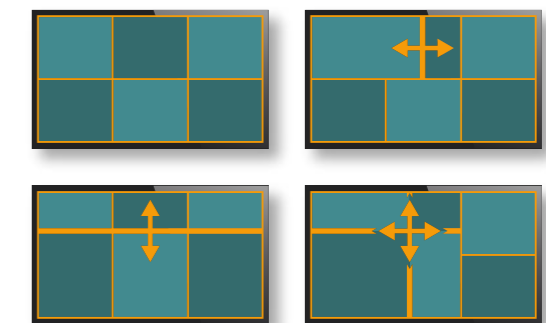
## Expandable Video Inputs and Outputs

Increase the number of connectable video sources and monitors by using the LMM0802-HDM in combination with a matrix switcher\*.

*\*tested and released by EIZO*

## Dynamic Layout

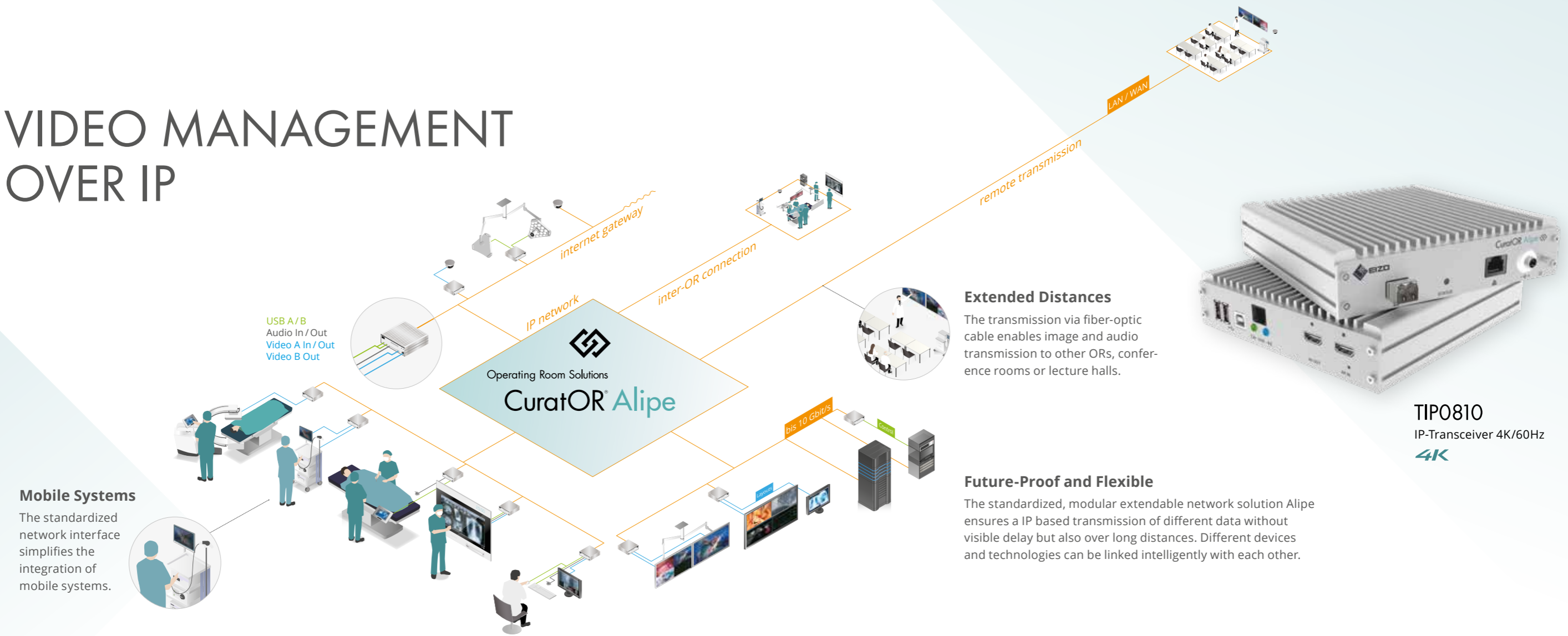
With the LMM0802-HDM, the positions and sizes of the windows specified during system configuration can be enlarged or reduced easily by the operator. In addition, each window can be zoomed in and out.



Easy change of window sizes



# VIDEO MANAGEMENT OVER IP



## Mobile Systems

The standardized network interface simplifies the integration of mobile systems.

## Extended Distances

The transmission via fiber-optic cable enables image and audio transmission to other ORs, conference rooms or lecture halls.

## Future-Proof and Flexible

The standardized, modular extendable network solution Alipe ensures a IP based transmission of different data without visible delay but also over long distances. Different devices and technologies can be linked intelligently with each other.

**TIP0810**  
IP-Transceiver 4K/60Hz  
**4K**

## Loss-Free Data Transmission with Maximum Image Quality

The Alipe IP-Transceiver allow for a transmission speed of up to 10 Gbit/sec. as well as image transmission of up to 4K resolution and a frame rate of up to 60 Hz. The devices work without compression, ensuring optimum image quality.



## Zero Latency

Images are transmitted with minimal delay at a single frame rate, offering excellent hand-eye coordination for the attending physician. This provides doctors with visual information in real time in response to every action, for example during endoscopic interventions.

## Universal Application

The IP-Transceiver TIP0810 can be used as an encoder or an decoder with the same hardware. The functionality of the connections can be configured using software. This simplifies installation and saves costs in storage and time in maintenance of the entire system.



## Integrated Video Management

Various video sources can be displayed simultaneously on a screen using a single cable. This enables multiple views such as Side-by-Side, Picture-in-Picture, and QuadView.

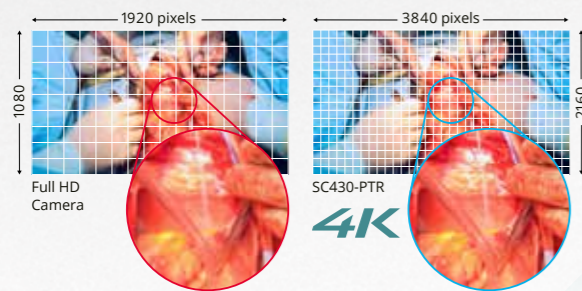


# SURGICAL FIELD CAMERA SYSTEM

Capturing surgical proceedings in detail is vital for various purposes. The CuratOR SC430-PTR clearly captures the surgical field in 4K UHD resolution and comes fully integrated with a triaxial camera mount for versatile positioning.

## SC430-PTR

4K/60p Surgical Field Camera System  
4K

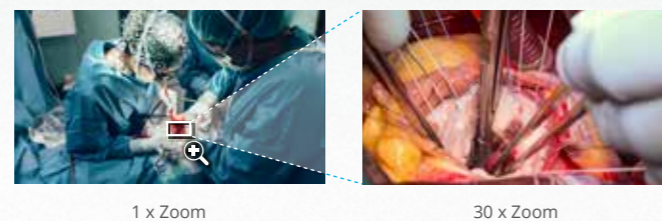


### 4K Ultra-High Definition Resolution

The surgical field camera captures images in 4K UHD resolution (3840 x 2160) with a progressive 60 Hz signal for smooth, high definition images of the surgical site.

### Zoom into Narrow Target Areas in Detail

The camera lens has up to 30x optical zoom, allowing the camera to easily zoom into small, target areas. Even when positioned at a safe distance, the camera can clearly zoom into and capture narrow surgical sites in detail.

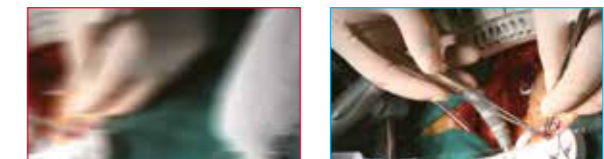
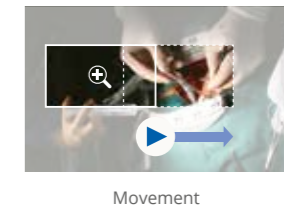


### Intuitive Panning and Tilting Direction

The camera head is integrated with the camera mount, allowing left and right, and up and down movements to remain parallel to the field of view, even after rolling. When panning or tilting, the camera head moves in relation to the field of view, rather than the position of the camera head like unintegrated cameras. This ensures intuitive and effortless panning and tilting.

### Smooth Positioning at High Zoom

Using unique, intelligent stepping technology, as the camera zooms in, the pan, tilt, and roll movements slow down to prevent the field of view from moving too quickly. With easily controllable movements, even under high zoom, preparation for surgery is made quicker and easier.



Without Stepping      With Stepping



### Convenient Camera Control from Anywhere

Camera movement, focus, and white balance can be adjusted using the front panel of the Camera Control Unit (CCU), or the supplied wireless remote control. Additionally, the CCU panel comes with a joystick for intuitive control. The camera can also be controlled from OR software, such as CuratOR Caliop.

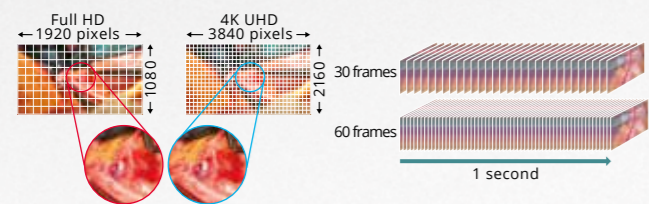
### Fully Integrated Camera Mount

The camera head comes fully integrated on a camera mount with +/-170 degrees pan, +90 to -30 degrees tilt, and +/-165 degrees roll to ensure that the field of view can be adjusted to the ideal location with ease.



# MEDICAL IMAGING RECORDER

The MIR-1 records medical imaging from endoscopy, operating microscopes, or surgical field cameras in high-quality 4K/60p. It can be used to facilitate medical education, training, and research with video recordings of surgical procedures.



## Connectivity with a Wide Range of Modalities

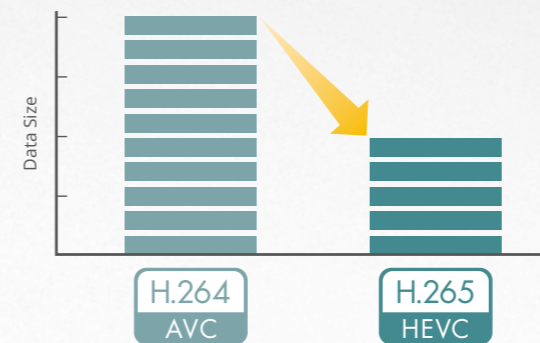
The BNC (12G-SDI) and HDMI video input connectors support up to 4K UHD (3840 x 2160 pixels) resolution for highly detailed video from endoscopes, operating microscopes, and surgical field cameras.



## High-Speed, Robust Internal Memory

The MIR-1 is equipped with a high-speed SSD (solid state drive) that is highly robust and resistant to vibration and shock. With a large capacity of 2 terabytes, up to 175 hours of 4K video or 885 hours of Full HD video can be stored in its internal memory.

*Recording time varies depending on recording conditions.*

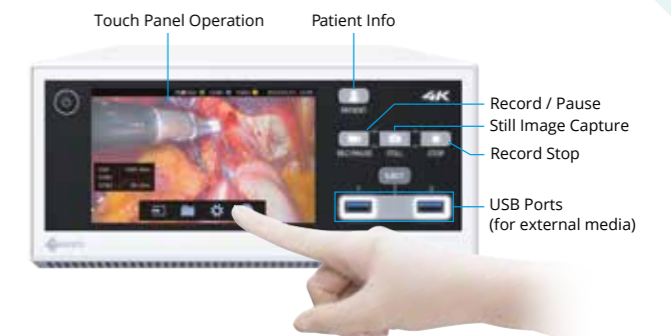


## H.264 and H.265 Video Compression

The MIR-1 supports the H.264 (AVC) and H.265 (HEVC) compression standards. H.264 offers a wide range of compatibility with devices and browsers, and H.265 is a newer standard that offers higher compression rates without sacrificing image quality. Operators can select the compression standard based on the playback or streaming needs of the recorded surgical video.

## Intuitive Operation

The 5-inch front panel uses analog resistive touch technology to allow operation even when wearing record gloves. Buttons for basic operations, such as record start/stop and still image capture are intuitive and responsive. The front panel displays at high brightness for clear visibility within the operating room.



## High-Quality Recording of 4K Surgical Video

The MIR-1 can natively record video at 4K UHD (3840 x 2160 pixels), as well as scale down to Full HD (1920 x 1080 pixels) resolution. It records at 60 frames per second for high-quality, smooth images. It can also capture and store still images in addition to video.

*Full HD and 4K signal sources cannot be recorded simultaneously.*



## Easily Confirm Recording Status

A recording indicator on the front panel allows the operator to confirm at a glance that the surgical procedure is being recorded. In addition, when used with EIZO's Curator EX-series of surgical monitors, the MIR-1's recording status can be displayed on the monitor, allowing the surgeon to check it without looking away from the monitor.

# SIGNAL ROUTING DEVICES

EIZO also offers flexible and easy-to-install signal routing solutions for use with its monitors and Large Monitor Managers.



**PDC0100**  
Analog-DVI Converter

## Analog-Digital Converter

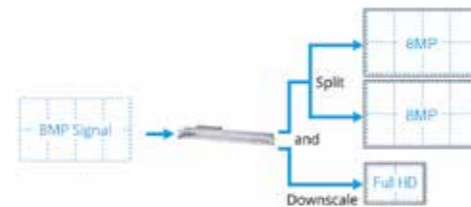
PDC0100 converts analog video signals to digital DVI format. The integrated Force Mode function supports unique analog input signals. With a range of accessories and high interconnectivity, the converter allows maximum flexibility for integration into existing systems.



**PDS0800-HD**  
DVI Splitter / Scaler

## Signal Splitter

By utilizing PDS0800-HD, signals coming from LMM56800 or LMM0802-HDM are repeated and doubled to connect two 8 megapixel monitors. The additional downscale output generates a Full HD representation of the content displayed on the large screen.



**TDL3600 / TDL2300**  
DVI Transmission Link

## Signal Transmission for a Long Distance

TDL enables transmission of high-quality video data of distances up to 36 meters with no loss in quality. Ethernet cable transmission allows robust handling and simple setup which easily runs through small conduits and holes.



# ACCESSORIES

## CONNECTION PARTS

### Signal Cables and Adapters

EIZO offers a variety of cables and adapters suitable for the signal inputs of the monitors.



### Power Cords

Country-specific power cords are available to match local requirements.

### SCC500

Short camera cable (5 m) for SC430-PTR.



### SCC3500

Camera cable (35 m) for SC430-PTR.



### SCA02

Camera cable extension adapter for SC430-PTR.



### TDL Components

Different TDL transmitters and receivers, as well as TDL cables of different lengths, are offered in predefined link sets or may be ordered individually in accordance with specific application needs.



## ALIFE ACCESSORIES

### Network Components

For the compilation of a complete IP transmission solution, network switches and connection components are available.



## WALL MOUNTS AND STANDS

### Wall Mount FWM6300

Compatible with monitors from 43" to 58".



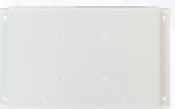
### Mounts for Alife

Various brackets allow easy and secure mounting of IP-transceivers on the image source, on the monitor or in a rack.



### VESA Adapter 400x200

For mounting to VESA 100x100 or 200x200 for EX4342 and EX4342-3D



## PROTECTION SCREEN

### FPP5800

Compatible with LS580W.



## GLASSES

### H3G01

3D glasses for EX3220-3D, EX3242-3D and EX4342-3D.



## FOOT SWITCH

### FS500

Compatible with MIR-1 (cable 5m).



# SURGICAL PANEL



CuratOR Surgical Panel  
SP1-24



CuratOR Surgical Panel **4K**  
SP1-324K



CuratOR Surgical Panel **4K**  
SP1-434K



CuratOR Surgical Panel **4K**  
SP1-494K

<b>Model Variations</b>		SP1-24: without touchscreen SP1-24T: with touchscreen	SP1-324K: without touchscreen SP1-324KT: with touchscreen	SP1-434K: without touchscreen SP1-434KT: with touchscreen	SP1-494K: without touchscreen SP1-494KT: with touchscreen
<b>Housing</b>	Material	Powder-coated sheet steel	Powder-coated sheet steel	Powder-coated sheet steel	Powder-coated sheet steel
	Front	Combination of power coated stainless steel and anti-reflective safety glass (ESG)	Combination of power coated stainless steel and anti-reflective safety glass (ESG)	Combination of power coated stainless steel and anti-reflective safety glass (ESG)	Combination of power coated stainless steel and anti-reflective safety glass (ESG)
	Color	Available in every RAL color	Available in every RAL color	Available in every RAL color	Available in every RAL color
	Mounting Options	Flush mounting (optional: surface mounting)	Flush mounting (optional: surface mounting)	Flush mounting (optional: surface mounting)	Flush mounting (optional: surface mounting)
<b>Panel 1</b>	Size	24"	32"	43"	49"
	Diagonal	60.5 cm (16:9 aspect ratio)	80.0 cm (16:9 aspect ratio)	108.0 cm (16:9 aspect ratio)	123.2 cm (16:9 aspect ratio)
	Panel Type	Color TFT LCD Panel	Color TFT LCD Panel with DICOM® Preset	Color TFT LCD Panel with DICOM® Preset	Color TFT LCD Panel (IPS) with DICOM® Preset
	Native Resolution	1920 × 1080 (Full HD)	3840 × 2160 (UHD)	3840 × 2160 (UHD)	3840 × 2160 (UHD)
	Display Colors	16.7 million colors	1.07 billion colors	1.07 billion colors	1.07 billion colors
	Pixel Pitch	0.275 mm x 0.275 mm	0.182 mm x 0.182 mm	0.245 mm x 0.245 mm	0.280 mm x 0.280 mm
	Brightness (typical)	350 cd/m²	450 cd/m²	700 cd/m²	700 cd/m²
	Contrast Ratio (typical)	1000:1	1300:1	1000:1	1100:1
	Viewing Angles (H/V, maximum)	178°, 178°	178°, 178°	178°, 178°	178°, 178°
	Response Time (typical)	14 ms (Gray-to-Gray)	14 ms (Gray-to-Gray)	9 ms (Gray-to-Gray)	8,0 ms (Gray-to-Gray)
	Backlight	LED	LED	LED	LED
	<b>Touchscreen</b>		Projected capacitive, multi-touch (SP1-24T only)	Projected capacitive, multi-touch (SP1-324KT only)	Projected capacitive, multi-touch (SP1-434KT only)
<b>IT Components</b> (expandable within the scope of the PC specifications)		INTEL® Core™ i5 processor – 3.0 GHz, INTEL® chipset, 18 MB cache, 8 GB DDR3 RAM, SATA SSD, LAN RJ 45 – 10/100/1000 Base TX x 2	INTEL® Core™ i5 processor – 3.0 GHz, INTEL® chipset, 18 MB cache, 8 GB DDR3 RAM, SATA SSD, LAN RJ 45 – 10/100/1000 Base TX x 2	INTEL® Core™ i5 processor – 3.0 GHz, INTEL® chipset, 18 MB cache, 8 GB DDR3 RAM, SATA SSD, LAN RJ 45 – 10/100/1000 Base TX x 2	INTEL® Core™ i5 processor – 3.0 GHz, INTEL® chipset, 18 MB cache, 8 GB DDR3 RAM, SATA SSD, LAN RJ 45 – 10/100/1000 Base TX x 2
<b>Operating System</b>		MS Windows 10 Pro; MS Windows 11 Pro	MS Windows 10 Pro; MS Windows 11 Pro	MS Windows 10 Pro; MS Windows 11 Pro	MS Windows 10 Pro; MS Windows 11 Pro
<b>Keyboard/Mouse</b>		Anti-microbial medical silicone keyboard with integrated mouse storage (foldable), silicone mouse (visual 5 keys, laser mouse /IP65, occupies 1x USB)	Anti-microbial medical silicone keyboard with integrated mouse storage (foldable), silicone mouse (visual 5 keys, laser mouse /IP65, occupies 1x USB)	Anti-microbial medical silicone keyboard with integrated mouse storage (foldable), silicone mouse (visual 5 keys, laser mouse /IP65, occupies 1x USB)	Anti-microbial medical silicone keyboard with integrated mouse storage (foldable), silicone mouse (visual 5 keys, laser mouse /IP65, occupies 1x USB)
<b>Inputs</b> (front side)	USB	USB Type-A: 2.0, 3.0	USB Type-A: 2.0, 3.0	USB Type-A: 2.0, 3.0	USB Type-A: 2.0, 3.0
	Signal Inputs (optional, with VMbasic only)	-	DisplayPort™, DVI-I Single Link, HDMI® (4K@30Hz), HDMI® (4K@60Hz) x 2	DisplayPort™, DVI-I Single Link, HDMI® (4K@30Hz), HDMI® (4K@60Hz) x 2	DisplayPort™, DVI-I Single Link, HDMI® (4K@30Hz), HDMI® (4K@60Hz) x 2
<b>Push Buttons</b> (front side)	Standard	Main switch, system switch	Main switch, system switch, LookUp table switch (DICOM normal, DICOM bright, Gamma 1.8, 2.0, 2.2, 2.4)	Main switch, system switch, LookUp table switch (DICOM normal, DICOM bright, Gamma 1.8, 2.0, 2.2, 2.4)	Main switch, system switch, LookUp table switch (DICOM normal, DICOM bright, Gamma 1.8, 2.0, 2.2, 2.4)
	VMbasic (optional)	-	Signal input switch (DisplayPort, DVI-I Single Link, HDMI (4K@30Hz), HDMI (4K@60Hz x 2), layout switch (PIP, PaP, LR, TB, Quadsplit, Single), rotate signal inputs with active layout	Signal input switch (DisplayPort, DVI-I Single Link, HDMI (4K@30Hz), HDMI (4K@60Hz x 2), layout switch (PIP, PaP, LR, TB, Quadsplit, Single), rotate signal inputs by keeping the active layout	Signal input switch (DisplayPort, DVI-I Single Link, HDMI (4K@30Hz), HDMI (4K@60Hz x 2), layout switch (PIP, PaP, LR, TB, Quadsplit, Single), rotate signal inputs by keeping the active layout
<b>Maximum Power Consumption</b>		157.7 W	190.0 W	220.0 W	265.0 W
<b>Power Requirements</b>		100–240 V/50–60 Hz/4–2 A	100–240 V/50–60 Hz/4–2 A	100–240 V/50–60 Hz/4–2 A	100–240 V/50–60 Hz/4–2 A
<b>Thermal Load</b>		567.7 kJ/h	684.0 kJ/h	792.0 kJ/h	954.0 kJ/h
<b>Net Weight</b>		appr. 45 kg	50 kg	70 kg	80 kg
<b>Certifications and Standards</b> (Please contact EIZO for the latest information)		CE/UKCA, IEC/EN 62368-1, IEC/EN 60601-1; IEC/EN 60601-1-2, RoHS, WEEE	CE/UKCA, IEC/EN 62368-1, IEC/EN 60601-1; IEC/EN 60601-1-2, RoHS, WEEE	CE/UKCA, IEC/EN 62368-1, IEC/EN 60601-1; IEC/EN 60601-1-2, RoHS, WEEE	CE/UKCA, IEC/EN 62368-1, IEC/EN 60601-1; IEC/EN 60601-1-2, RoHS, WEEE
<b>Dimensions (mm)</b>	Device (WxHxD)	850 x 625 x 120	1050 x 700 x 120	1300 x 800 x 120	1400 x 900 x 120
	Niche (WxHxD)	860 x 635 x 140	1060 x 710 x 140	1310 x 810 x 140	1410 x 910 x 140
	Masking Frame (WxH)	880 x 655	1080 x 730	1330 x 830	1430 x 930

# SURGICAL PANEL



CuratOR Surgical Panel **4K**  
SP1-554K



CuratOR Surgical Panel **4K**  
SP1-654K



CuratOR Surgical Panel  
SP2-24-24



CuratOR Surgical Panel **4K**  
SP2-24-494K



CuratOR Surgical Panel **4K**  
SP2-24-554K

Model Variations		SP1-554K: without touchscreen SP1-554KT: with touchscreen	SP1-654K: without touchscreen SP1-654KT: with touchscreen	SP2-24-24: without touchscreen SP2-24T-24: with touchscreen (24" left) SP2-24-24T: with touchscreen (24" right) SP2-24T-24T: with touchscreen (both 24")	SP2-24-494K: without touchscreen SP2-24T-494K: with touchscreen (24") SP2-24-494KT: with touchscreen (49") SP2-24T-494KT: with touchscreen (24", 49")	SP2-24-554K: without touchscreen SP2-24T-554K: with touchscreen (24") SP2-24-554KT: with touchscreen (55") SP2-24T-554KT: with touchscreen (24", 55")
Housing	Material	Powder-coated sheet steel	Powder-coated sheet steel	Powder-coated sheet steel	Powder-coated sheet steel	Powder-coated sheet steel
	Front	Combination of power coated stainless steel and anti-reflective safety glass (ESG)	Combination of power coated stainless steel and anti-reflective safety glass (ESG)	Combination of power coated stainless steel and anti-reflective safety glass (ESG)	Combination of power coated stainless steel and anti-reflective safety glass (ESG)	Combination of power coated stainless steel and anti-reflective safety glass (ESG)
	Color	Available in every RAL color	Available in every RAL color	Available in every RAL color	Available in every RAL color	Available in every RAL color
Panel 1	Mounting Options	Flush mounting (optional: surface mounting)	Flush mounting (optional: surface mounting)	Flush mounting (optional: surface mounting)	Flush mounting (optional: surface mounting)	Flush mounting (optional: surface mounting)
	Size	55"	65"	24"	24"	24"
	Diagonal	138.8 cm (16:9 aspect ratio)	163.9 cm (16:9 aspect ratio)	60.5 cm (16:9 aspect ratio)	60.5 cm (16:9 aspect ratio)	60.5 cm (16:9 aspect ratio)
	Panel Type	Color TFT LCD Panel with DICOM® Preset	Color TFT LCD Panel with DICOM® Preset	Color TFT LCD Panel	Color TFT LCD Panel	Color TFT LCD Panel
	Native Resolution	3840 × 2160 (UHD)	3840 × 2160 (UHD)	1920 × 1080 (Full HD)	1920 × 1080 (Full HD)	1920 × 1080 (Full HD)
	Display Colors	1.07 billion colors	1.07 billion colors	16.7 million colors	16.7 million colors	16.7 million colors
	Pixel Pitch	0.315 mm x 0.315 mm	0.372 mm x 0.372 mm	0.275 mm x 0.275 mm	0.275 mm x 0.275 mm	0.275 mm x 0.275 mm
	Brightness (typical)	700 cd/m²	500 cd/m²	350 cd/m²	350 cd/m²	350 cd/m²
	Contrast Ratio (typical)	1100:1	1100:1	1000:1	1000:1	1000:1
	Viewing Angles (H/V, maximum)	178°, 178°	178°, 178°	178°, 178°	178°, 178°	178°, 178°
Panel 2	Response Time (typical)	8.0 ms (Gray-to-Gray)	8.0 ms (Gray-to-Gray)	14 ms (Gray-to-Gray)	14 ms (Gray-to-Gray)	14 ms (Gray-to-Gray)
	Backlight	LED	LED	LED	LED	LED
	Size	-	-	24"	49"	55"
	Diagonal	-	-	60.5 cm (16:9 aspect ratio)	123.2 cm (16:9 aspect ratio)	138.8 cm (16:9 aspect ratio)
	Panel Type	-	-	Color TFT LCD Panel	Color TFT LCD Panel (IPS) with DICOM® Preset	Color TFT LCD Panel with DICOM® Preset
	Native Resolution	-	-	1920 × 1080 (Full HD)	3840 × 2160 (UHD)	3840 × 2160 (UHD)
	Display Colors	-	-	16.7 million colors	1.07 billion colors	1.07 billion colors
	Pixel Pitch	-	-	0.275 mm x 0.275 mm	0.280 mm x 0.280 mm	0.315 mm x 0.315 mm
	Brightness (typical)	-	-	350 cd/m²	700 cd/m²	700 cd/m²
	Contrast Ratio (typical)	-	-	1000:1	1100:1	1100:1
Touchscreen	Viewing Angles (H/V, maximum)	-	-	178°, 178°	178°, 178°	178°, 178°
	Response Time (typical)	-	-	14 ms (Grey to Grey)	8.0 ms (Gray-to-Gray)	8.0 ms (Gray-to-Gray)
	Backlight	-	-	LED	LED	LED
Touchscreen		Projected capacitive, multi-touch (SP1-554KT only)	Projected capacitive, multi-touch (SP1-654KT only)	Projected capacitive, multi-touch (SP2-24-24T, SP2-24T-24, SP2-24T-24T only)	Projected capacitive, multi-touch (SP2-24T-494K, SP2-24-494KT, SP2-24T-494KT only)	Projected capacitive, multi-touch (SP2-24T-554K, SP2-24-554KT, SP2-24T-554KT only)
IT Components (expandable within the scope of the PC specifications)		INTEL® Core™ i5 processor – 3.0 GHz, INTEL® chipset, 18 MB cache, 8 GB DDR3 RAM, SATA SSD, LAN RJ 45 – 10/100/1000 Base TX x 2	INTEL® Core™ i5 processor – 3.0 GHz, INTEL® chipset, 18 MB cache, 8 GB DDR3 RAM, SATA SSD, LAN RJ 45 – 10/100/1000 Base TX x 2	INTEL® Core™ i5 processor – 3.0 GHz, INTEL® chipset, 18 MB cache, 8 GB DDR3 RAM, SATA SSD, LAN RJ 45 – 10/100/1000 Base TX x 2	INTEL® Core™ i5 processor – 3.0 GHz, INTEL® chipset, 18 MB cache, 8 GB DDR3 RAM, SATA SSD, LAN RJ 45 – 10/100/1000 Base TX x 2	INTEL® Core™ i5 processor – 3.0 GHz, INTEL® chipset, 18 MB cache, 8 GB DDR3 RAM, SATA SSD, LAN RJ 45 – 10/100/1000 Base TX x 2
Operating System		MS Windows 10 Pro; MS Windows 11 Pro	MS Windows 10 Pro; MS Windows 11 Pro	MS Windows 10 Pro; MS Windows 11 Pro	MS Windows 10 Pro; MS Windows 11 Pro	MS Windows 10 Pro; MS Windows 11 Pro
Keyboard/Mouse		Anti-microbial medical silicone keyboard with integrated mouse storage (foldable), silicone mouse (visual 5 keys, laser mouse /IP65, occupies 1x USB)	Anti-microbial medical silicone keyboard with integrated mouse storage (foldable), silicone mouse (visual 5 keys, laser mouse /IP65, occupies 1x USB)	Anti-microbial medical silicone keyboard with integrated mouse storage (foldable), silicone mouse (visual 5 keys, laser mouse /IP65, occupies 1x USB)	Anti-microbial medical silicone keyboard with integrated mouse storage (foldable), silicone mouse (visual 5 keys, laser mouse /IP65, occupies 1x USB)	Anti-microbial medical silicone keyboard with integrated mouse storage (foldable), silicone mouse (visual 5 keys, laser mouse /IP65, occupies 1x USB)
Inputs (front side)	USB	USB Type-A: 2.0, 3.0	USB Type-A: 2.0, 3.0	USB Type-A: 2.0, 3.0	USB Type-A: 2.0, 3.0	USB Type-A: 2.0, 3.0
	Signal Inputs (optional, with VMbasic only)	DisplayPort™, DVI-I Single Link, HDMI® (4K@30Hz), HDMI® (4K@60Hz) x 2	DisplayPort™, DVI-I Single Link, HDMI® (4K@30Hz), HDMI® (4K@60Hz) x 2	-	DisplayPort™, DVI-I Single Link, HDMI® (4K@30Hz), HDMI® (4K@60Hz) x 2	DisplayPort™, DVI-I Single Link, HDMI® (4K@30Hz), HDMI® (4K@60Hz) x 2
Push Buttons (front side)	Standard	Main switch, system switch, LookUp table switch (DICOM normal, DICOM bright, Gamma 1.8, 2.0, 2.2, 2.4),	Main switch, system switch, LookUp table switch (DICOM normal, DICOM bright, Gamma 1.8, 2.0, 2.2, 2.4),	Main switch, system switch	Main switch, system switch, LookUp table switch (DICOM normal, DICOM bright, Gamma 1.8, 2.0, 2.2, 2.4),	Main switch, system switch, LookUp table switch (DICOM normal, DICOM bright, Gamma 1.8, 2.0, 2.2, 2.4),
	VMbasic (optional)	Signal input switch (DisplayPort, DVI-I Single Link, HDMI (4K@30Hz), HDMI (4K@60Hz x 2), layout switch (PIP, PaP, LR, TB, Quadsplit, Single), rotate signal inputs by keeping the active layout	Signal input switch (DisplayPort, DVI-I Single Link, HDMI (4K@30Hz), HDMI (4K@60Hz x 2), layout switch (PIP, PaP, LR, TB, Quadsplit, Single), rotate signal inputs by keeping the active layout	-	Signal input switch (DisplayPort, DVI-I Single Link, HDMI (4K@30Hz), HDMI (4K@60Hz x 2), layout switch (PIP, PaP, LR, TB, Quadsplit, Single), rotate signal inputs by keeping the active layout	Signal input switch (DisplayPort, DVI-I Single Link, HDMI (4K@30Hz), HDMI (4K@60Hz x 2), layout switch (PIP, PaP, LR, TB, Quadsplit, Single), rotate signal inputs by keeping the active layout
Maximum Power Consumption		275.0 W	287.0 W	220.0 W	290.0 W	300.0 W
Power Requirements		100–240 V/50–60 Hz/4–2 A	100–240 V/50–60 Hz/4–2 A	100–240 V/50–60 Hz/4–2 A	100–240 V / 50 – 60 Hz / 4 – 2 A	100–240 V/50–60 Hz/4–2 A
Thermal Load		990.0 kJ/h	1033.2 kJ/h	792.0 kJ/h	1044.0 kJ/h	1080.0 kJ/h
Net Weight		85 kg	90 kg	100 kg	105 kg	110 kg
Certifications and Standards (Please contact EIZO for the latest information.)		CE/UKCA, IEC/EN 62368-1, IEC/EN 60601-1; IEC/EN 60601-1-2, RoHS, WEEE	CE/UKCA, IEC/EN 62368-1, IEC/EN 60601-1; IEC/EN 60601-1-2, RoHS, WEEE	CE/UKCA, IEC/EN 62368-1, IEC/EN 60601-1; IEC/EN 60601-1-2, RoHS, WEEE	CE/UKCA, IEC/EN 62368-1, IEC/EN 60601-1; IEC/EN 60601-1-2, RoHS, WEEE	CE/UKCA, IEC/EN 62368-1, IEC/EN 60601-1; IEC/EN 60601-1-2, RoHS, WEEE
Dimensions (mm)	Device (WxHxD)	1600 x 1000 x 120	1800 x 1300 x 120	1400 x 625 x 120	2000 x 900 x 120	2200 x 1000 x 120
	Niche (WxHxD)	1610 x 1010 x 140	1810 x 1310 x 140	1410 x 635 x 140	2010 x 910 x 140	2210 x 1010 x 140
	Masking Frame (WxH)	1630 x 1030	1830 x 1330	1430 x 655	2030 x 930	2230 x 1030

SPECIFICATIONS

# MONITORS



CuratOR EX2721 **27" WIDE**



CuratOR EX3220 **31.5" WIDE**



CuratOR EX3242 **32" WIDE 4K**



CuratOR EX3220-3D **31.5" WIDE 3D**



CuratOR EX3242-3D **32" WIDE 4K 3D**



CuratOR EX4342 **43" WIDE 4K**



CuratOR EX4342-3D **43" WIDE 4K 3D**

Model Variations	EX2721-WT: without stand	EX3220-WT: without stand	EX3242-WT: without stand	EX3220-3D-WT: without stand	EX3242-3D-WT: without stand	EX4342: without stand	EX4342-3D: without stand	
Cabinet Color	White	White	White	Black (front), white (rear)	Black (front), white (rear)	White	White	
Panel	Type	Color (IPS)	Color (IPS)	Color (IPS)	Color (IPS)	Color (IPS)	Color (IPS)	
	Backlight	LED	LED	LED	LED	LED	LED	
	Size	27.0" (68.6 cm)	31.5" (80.1 cm)	32" (81.3 cm)	31.5" (80.1 cm)	32" (81.3 cm)	43" (109.2 cm)	43" (109.2 cm)
	Native Resolution	1920 x 1080 (16:9 aspect ratio)	1920 x 1080 (16:9 aspect ratio)	3840 x 2160 (16:9 aspect ratio)	1920 x 1080 (16:9 aspect ratio)	3840 x 2160 (16:9 aspect ratio)	3840 x 2160 (16:9 aspect ratio)	3840 x 2160 (16:9 aspect ratio)
	Viewable Image Size (H x V)	598 x 336 mm	698 x 393 mm	708 x 399 mm	698 x 393 mm	708 x 399 mm	941.2 x 529.4 mm	941.2 x 529.4 mm
	Pixel Pitch	0.311 x 0.311 mm	0.364 x 0.364 mm	0.185 x 0.185 mm	0.364 x 0.364 mm	0.185 x 0.185 mm	0.2451 x 0.2451 mm	0.2451 x 0.2451 mm
	Display Colors	10-bit colors (SDI): 1.07 billion colors (maximum), 8-bit colors: 16.77 million colors	10-bit colors (SDI): 1.07 billion colors (maximum), 8-bit colors: 16.77 million colors	10-bit colors (SDI/DisplayPort/HDMI): 1.07 billion colors (maximum), 8-bit colors: 16.77 million colors	10-bit colors (SDI): 1.07 billion colors (maximum), 8-bit colors: 16.77 million colors	10-bit colors (SDI/DisplayPort/HDMI): 1.07 billion colors (maximum), 8-bit colors: 16.77 million colors	10-bit colors (SDI/DisplayPort/HDMI): 1.07 billion colors (maximum), 8-bit colors: 16.77 million colors	10-bit colors (SDI/DisplayPort/HDMI): 1.07 billion colors (maximum), 8-bit colors: 16.77 million colors
	Viewing Angles (H/V, typical)	178°/178°	178°/178°	178°/178°	178°/178° (2D mode)	178°/178° (2D mode)	178°/178°	178°/178°
	Brightness (typical)	900 cd/m <sup>2</sup>	650 cd/m <sup>2</sup>	850 cd/m <sup>2</sup>	650 cd/m <sup>2</sup>	850 cd/m <sup>2</sup>	700 cd/m <sup>2</sup>	700 cd/m <sup>2</sup>
	Contrast Ratio (typical)	1000:1	1400:1	1800:1	1500:1	1500:1	1000:1	1000:1
	Response Time (typical)	14 ms (black-white-black)	16 ms (black-white-black)	20 ms (black-white-black)	16 ms (black-white-black)	20 ms (black-white-black)	8 ms (gray-to-gray)	8 ms (gray-to-gray)
Color Gamut (typical)	sRGB	sRGB	BT.2020 emulation	sRGB	BT.2020 emulation	BT.2020 emulation	BT.2020 emulation	
Video Signals	Input Terminals	BNC (3G-SDI), DVI-D x 2 (HDCP 1.4), D-Sub 15 pin (mini), S-Video, BNC (Composite)	BNC (3G-SDI) x 2, DVI-D x 2 (HDCP 1.4), D-Sub 15 pin (mini), BNC (RGB C-Sync or Component), S-Video, BNC (Composite)	DisplayPort (HDCP 1.3), HDMI (HDCP 2.2/1.4), BNC (12G-SDI), BNC (3G-SDI), DVI-D (HDCP 1.4)	BNC (3G-SDI) x 2, DVI-D x 2 (HDCP 1.4), D-Sub 15 pin (mini), BNC (RGB C-Sync or Component), S-Video, BNC (Composite)	DisplayPort (HDCP 1.3), HDMI (HDCP 1.4), BNC (12G-SDI) x 2, DVI-D (HDCP 1.4)	BNC (3G-SDI), BNC (12G-SDI), DVI-D, DisplayPort, HDMI	BNC (3G-SDI), BNC (12G-SDI), DVI-D, DisplayPort, HDMI
	Output Terminals	BNC (3G-SDI), DVI-D, S-Video, BNC (Composite)	BNC (3G-SDI) x 2, DVI-D, BNC (RGB C-Sync or Component), S-Video, BNC (Composite)	DisplayPort, BNC (12G-SDI), DVI-D	BNC (3G-SDI) x 2, DVI-D, BNC (RGB C-Sync or Component), S-Video, BNC (Composite)	DisplayPort, BNC (12G-SDI), DVI-D	DisplayPort, BNC (12G-SDI), DVI-D	DisplayPort, BNC (12G-SDI), DVI-D
	Digital Scanning Frequency (H/V)	15-75 kHz/24-60 Hz	15-75 kHz/24-60 Hz	18-136 kHz/23-71 Hz	15-75 kHz/24-60 Hz	18-136 kHz/23-71 Hz	-	-
	Analog Scanning Frequency (H/V)	15-80 kHz/24-85 Hz	15-80 kHz/24-85 Hz	-	15-80 kHz/24-85 Hz	-	-	-
	Sync Formats	Separate, Composite, Sync on green	Separate, Composite, Sync on green	-	Separate, Composite, Sync on green	-	-	-
Power	Power Input	AC 100-240 V: 50/60 Hz	AC 100-240 V: 50/60 Hz	AC 100-240 V: 50/60 Hz	AC 100-240 V: 50/60 Hz	AC adapter input: 100-240 V: 50-60 Hz Monitor input: DC 48 V, 3.0 A	AC adapter input: 100-240 V: 50-60 Hz Monitor input: DC 48 V, 3.0 A	
	Maximum Power Consumption	79 W	97 W	199 W	97 W	205 W	144 W	
	Power Output	DC 5V, 1A	DC 5V, 1A	DC 5V, 2A	DC 5V, 1A	DC 5V, 2A	DC 5V, 2A	DC 5V, 2A
Features & Functions	Simultaneous Display	Picture-by-Picture (2 PbyP), Picture-in-Picture (PinP)	Picture-by-Picture (2 PbyP), Picture-in-Picture (PinP)	Picture-by-Picture (2 PbyP), Picture-in-Picture (PinP)	Picture-by-Picture (2 PbyP), Picture-in-Picture (PinP)	Picture-by-Picture (2 PbyP), Picture-in-Picture (PinP)	Picture-by-Picture (2 PbyP), Picture-in-Picture (PinP)	
	OSD Languages	English, German, French, Italian, Spanish, Swedish, Japanese, Simplified Chinese, Traditional Chinese	English, German, French, Italian, Spanish, Swedish, Japanese, Simplified Chinese, Traditional Chinese	English, German, French, Spanish, Italian, Swedish, Japanese, Simplified Chinese, Traditional Chinese, Russian, Portuguese	English, German, French, Italian, Spanish, Swedish, Japanese, Simplified Chinese, Traditional Chinese	English, German, French, Spanish, Italian, Swedish, Japanese, Simplified Chinese, Traditional Chinese, Russian, Portuguese	English, German, French, Spanish, Italian, Swedish, Japanese, Simplified Chinese, Traditional Chinese, Russian, Portuguese	English, German, French, Spanish, Italian, Swedish, Japanese, Simplified Chinese, Traditional Chinese, Russian, Portuguese
	Others	Remote control (RS-232C, GPI)	Remote control (RS-232C, GPI)	Remote control (RS-232C), 180° rotation, Mirroring, Optical Bonding	3D (Side by Side, Line by Line, Top and Bottom, SIMUL), Remote control (RS-232C, GPI), Optical Bonding	4K 3D (Side by Side, Line by Line, Top and Bottom, SIMUL), 3D (Side by Side, Line by Line, Top and Bottom, SIMUL), Remote control (RS-232C), 180° rotation, Mirroring, Optical Bonding	Auto Input Detection, Gamma switch, color temperature switch, remote control (RS-232C)	4K 3D (Line by Line), 3D (Line by Line), Auto Input Detection, Gamma switch, color temperature switch, remote control (RS-232C)
Physical Specifications	Net Weight	8.5 kg	9.9 kg	13.2 kg	10.2 kg	13.6 kg	16.4 kg	
	Hole Spacing (VESA Standard)	100 x 100 mm, M4, depth 5-9 mm	200 x 200 mm, M6, depth 7-10 mm/ 100 x 100 mm, M4, depth 5-9 mm	200 x 200 mm, M6, depth 7-12 mm/ 100 x 100 mm, M4, depth 7-11 mm	200 x 200 mm, M6, depth 7-10 mm/ 100 x 100 mm, M4, depth 5-9 mm	200 x 200 mm, M6, depth 7-12 mm/ 100 x 100 mm, M4, depth 7-11 mm	400 x 200 mm, M8, depth 8-15 mm	400 x 200 mm, M8, depth 8-15 mm
Degree of Protection	IP45 (Front), IP32 (Rear)	IP45 (front), IP32 (rear)	IP45 (front), IP32 (rear)	IP45 (front), IP32 (rear)	IP45 (front), IP32 (rear)	IP45 (front), IP32 (rear)	IP45 (front), IP32 (rear)	
Certifications & Standards <small>(Please contact EIZO for the latest information.)</small>	CE/UKCA (Medical Device), ANSI/AAMI ES60601-1, CAN/CSA-C22.2 No. 60601-1, IEC/EN60601-1, VCCI-A, FCC-A, CAN ICES-3(A), RCM, RoHS, China RoHS, WEEE, CCC, EAC, BIS	CE/UKCA (Medical Device), ANSI/AAMI ES60601-1, CAN/CSA-C22.2 No. 60601-1, IEC/EN60601-1, VCCI-A, FCC-A, CAN ICES-3(A), RCM, RoHS, China RoHS, WEEE, CCC, EAC, BIS	CE/UKCA (Medical Device), ANSI/AAMI ES60601-1, CAN/CSA-C22.2 No. 60601-1, IEC/EN60601-1, VCCI-A, FCC-A, CAN ICES-3(A), RCM, RoHS, China RoHS, WEEE, CCC, EAC, BIS	CE/UKCA (Medical Device), ANSI/AAMI ES60601-1, CAN/CSA-C22.2 No. 60601-1, IEC/EN60601-1, VCCI-A, FCC-A, CAN ICES-3(A), RCM, RoHS, China RoHS, WEEE, CCC, EAC, BIS	CE/UKCA (Medical Device), ANSI/AAMI ES60601-1, CAN/CSA-C22.2 No. 60601-1, IEC/EN60601-1, VCCI-A, FCC-A, CAN ICES-3(A), RCM, RoHS, China RoHS, WEEE, CCC, EAC, BIS	CE/UKCA (Medical Device), ANSI/AAMI ES60601-1, CAN/CSA-C22.2 No. 60601-1, IEC/EN60601-1, VCCI-A, FCC-A, CAN ICES-3(A), RCM, RoHS, China RoHS, WEEE, CCC, BIS	CE/UKCA (Medical Device), ANSI/AAMI ES60601-1, CAN/CSA-C22.2 No. 60601-1, IEC/EN60601-1, VCCI-A, FCC-A, RoHS, China RoHS, WEEE, CCC, BIS	
FDA	Class I	Class I	Class I	Class I	Class I	Class I	Class I	
Supplied Accessories <small>(May vary by country. Please contact EIZO for details.)</small>	AC power cord, AC adapter, screws for VESA adapter x 4, cable cover, Utility Disk (PDF installation manual), instructions for use	AC power cord, AC adapter, screws for VESA adapter x 8, cable cover, Utility Disk (PDF installation manual), instructions for use	AC power cord, AC adapter, screws for VESA adapter x 8, cable cover, Utility Disk (PDF installation manual), instructions for use	AC power cord, AC adapter, screws for VESA adapter x 8, 3D fogless polarized glasses x 3, cable cover, Utility Disk (PDF installation manual), instructions for use	AC power cord, AC adapter, 3D fogless polarized glasses x 3, screws for VESA adapter x 8, cable cover, Utility Disk (PDF installation manual), instructions for use	AC power adapter, cable cover, monitor attachment screws x 4, cable tie x 2, Utility Disk (Instructions for Use, Installation Manual)	AC power adapter, 3D fogless polarized glasses x 3, cable cover, monitor attachment screws x 4, cable tie x 2, Utility Disk (Instructions for Use, Installation Manual)	
Dimensions (Unit: mm)								
Connectors								

# MONITORS



CuratOR<sup>®</sup> EX4942 **49" WIDE** 4K



CuratOR<sup>®</sup> EX5542 **55" WIDE** 4K



CuratOR<sup>®</sup> LX1910 **19"**



CuratOR<sup>®</sup> LX3240-MR **31.5" WIDE** 4K



RadiForce<sup>®</sup> LS580W **57.5" WIDE** 4K

Model Variations	EX4942: without stand	EX5542: without stand	LX1910: without stand LX1910-S: with stand	LX3240-MR: without stand	LS580W: without stand	
Cabinet Color	White	White	Black	Black	Black	
Panel	Type	Color (IPS)	Color (IPS)	Color (IPS)	Color (IPS)	
	Backlight	LED	LED	LED	LED	
	Size	49" (124.5 cm)	55" (139.7 cm)	19" (48 cm)	31.5" (80 cm)	57.5" (146 cm)
	Native Resolution	3840 x 2160 (16:9 aspect ratio)	3840 x 2160 (16:9 aspect ratio)	1280 x 1024 (5:4 aspect ratio)	3840 x 2160 (16:9 aspect ratio)	3840 x 2160 (16:9 aspect ratio)
	Viewable Image Size (H x V)	1073.8 x 604 mm	1209.6 x 680.4 mm	376.3 x 301.0 mm	697.3 x 392.2 mm	1270.1 x 721.4 mm
	Pixel Pitch	0.279 x 0.279 mm	0.315 x 0.315 mm	0.294 x 0.294 mm	0.181 x 0.181 mm	0.331 x 0.334 mm
	Display Colors	10-bit colors (SDI/DisplayPort/HDMI): 1.07 billion colors (maximum), 8-bit colors: 16.77 million colors	10-bit colors (SDI/DisplayPort/HDMI): 1.07 billion colors (maximum), 8-bit colors: 16.77 million colors	8-bit colors: 16.77 million colors	10-bit colors: 1.07 billion colors	8-bit colors: 16.77 million colors
	Viewing Angles (H / V, typical)	178°/178°	178°/178°	178°/178°	178°/178°	176°/176°
	Brightness (typical)	700 cd/m <sup>2</sup>	700 cd/m <sup>2</sup>	700 cd/m <sup>2</sup>	1000 cd/m <sup>2</sup>	700 cd/m <sup>2</sup>
	Recommended Brightness for Calibration	-	-	400 cd/m <sup>2</sup>	400 cd/m <sup>2</sup>	350 cd/m <sup>2</sup>
	Contrast Ratio (typical)	1100:1	1100:1	1000:1	1300:1	4000:1
	Response Time (typical)	8 ms (gray-to-gray)	8 ms (gray-to-gray)	13 ms rising, 12 ms falling	14 ms (midtone)	9.5 ms (midtone)
	Color Gamut (typical)	BT.2020 emulation	BT.2020 emulation	-	sRGB	NTSC 72%
Video Signals	Input Terminals	BNC (3G-SDI), BNC (12G-SDI), DVI-D, DisplayPort, HDMI	BNC (3G-SDI), BNC (12G-SDI), DVI-D, DisplayPort, HDMI	DisplayPort, DVI-I (digital and analog RGBHV)	DisplayPort™ (4K UHD), DisplayPort™ (Full HD), HDMI® (DVI-Signal Full HD) x 2	DVI-D (dual link) x 2
	Output Terminals	BNC (12G-SDI), DVI-D, DisplayPort	BNC (12G-SDI), DVI-D, DisplayPort	-	-	-
	Digital Scanning Frequency (H / V)	-	-	30 - 100 kHz/50-85 Hz	131.3 kHz/60 Hz	131.3 kHz/59.7-60.3 Hz
	Analog Scanning Frequency (H / V)	-	-	30 - 100 kHz/50-85 Hz	-	-
	Sync Formats	-	-	Separate, Composite, Sync on green	-	-
USB	Upstream	-	-	USB 2.0: Type-B	USB 2.0: Type-B	-
	Downstream	-	-	USB 2.0: Type-A	USB 2.0: Type-A x 2	-
Power	Power Requirements	100-240 V: 50-60 Hz	100-240 V: 50-60 Hz	AC 100-240 V: 50/60 Hz	AC adapter input: 100 - 240 V: 50-60 Hz Monitor: 24 VDC, 6 A	AC 100-240 V: 50/60 Hz
	Maximum Power Consumption	160 W	170 W	45 W	155 W	350 W
	Typical Power Consumption	-	-	-	-	-
	Power Save Mode	-	-	Less than 2 W	20 W (DMPM mode)	Less than 38 W
	Power Management	-	-	Digital: DVI DMPM, Analog: VESA DPM	DMPM	DVI DMPM
Power Output	DC 5V, 2A	DC 5V, 2A	DC 5V, 1A (Hirose)	DC 5V, 1A (Hirose)	DC 5V, 1A (Hirose)	
Sensor	-	-	Backlight Sensor	Backlight Sensor	Backlight Sensor	
Features & Functions	Simultaneous Display	Picture-by-Picture (2 PbyP), Picture-in-Picture (PinP)	Picture-by-Picture (2 PbyP), Picture-in-Picture (PinP)	-	-	-
	OSD Languages	English, German, French, Spanish, Italian, Swedish, Japanese, Simplified Chinese, Traditional Chinese, Russian, Portuguese	English, German, French, Spanish, Italian, Swedish, Japanese, Simplified Chinese, Traditional Chinese, Russian, Portuguese	English, German	English	-
	Others	Auto Input Detection, Gamma switch, color temperature switch, remote control (RS-232C)	Auto Input Detection, Gamma switch, color temperature switch, remote control (RS-232C)	Prioritised input (DVI-A) for emergency signal	Cal-Switch, resistance to magnetic fields up to 100 mT	Redundant components (power supply, backlight, data transmission)
	Net Weight (Without Stand)	25 kg	29.3 kg	LX1910: 4.3 kg LX1910-S: 6.1 kg	17.2 kg	47 kg
Hole Spacing (VESA Standard)	400 x 200 mm, M8, depth 11-16 mm	400 x 200 mm, M8, depth 11-16 mm	100 x 100 mm, M4, depth 5-10 mm	100 x 100 mm and 200 x 100, M4, depth 5-10 mm	400 x 400 mm, M8, depth 16-20 mm	
Degree of Protection	IP45 (front), IP32 (rear)	IP45 (front), IP32 (rear)	IP20	IP20	IP20	
Certifications & Standards (Please contact EIZO for the latest information.)	CE/UKCA (Medical Device), ANSI/AAMI ES60601-1, CAN/CSA-C22.2 No. 60601-1, IEC/EN 60601-1, VCCI-B, FCC-B, CAN ICES-3(B), RCM, RoHS, China RoHS, WEEE, CCC	CE/UKCA (Medical Device), ANSI/AAMI ES60601-1, CAN/CSA-C22.2 No. 60601-1, IEC/EN 60601-1, VCCI-B, FCC-B, CAN ICES-3(B), RCM, RoHS, China RoHS, WEEE, CCC	CE/UKCA (Medical Device), IEC/EN60601-1, CAN/CSA C22.2 No. 60601-1, ANSI/AAMI ES60601-1, EN60601-1-2 Class B, FCC-B, RoHS, China RoHS, WEEE, CCC, BIS	CE/UKCA (Medical Device), IEC/EN60601-1, CAN/CSA C22.2 No. 60601-1, ANSI/AAMI ES60601-1, EN60601-1-2 Class B, FCC-B, RoHS, WEEE	CE/UKCA (Medical Device), IEC/EN60601-1, CAN/CSA C22.2 No. 60601-1, ANSI/AAMI 60601-1, EN60601-1-2 Class B, FCC-B, RCM, RoHS, China RoHS, WEEE, CCC, BIS	
FDA	Class I	Class I	-	-	Class II	
Supplied Accessories (May vary by country. Please contact EIZO for details.)	Cable cover, monitor attachment screws x 4, cable tie x 2, Utility Disk (Instructions for Use, Installation Manual)	Cable cover, monitor attachment screws x 4, cable tie x 2, Utility Disk (Instructions for Use, Installation Manual)	Adapter (D-Sub - DVI), adapter (BNC - D-Sub), Utility Disk (PDF Instructions for Use)	AC adapter + cable (15 m), Utility Disk (PDF Instructions for Use)	Dual link signal cable (DVI-D - DVI-D) x 2, Utility Disk (PDF Instructions for Use)	
Dimensions (unit: mm)						
Connectors						



# VIDEO-MANAGEMENT



**LMM56800**  
Large Monitor Manager

**LMM0802-HDM**  
Large Monitor Manager

EX3220, EX3220-3D	-	✓
EX3242-3D, EX4342-3D	-	✓
EX3242, EX4342, EX4942, EX5542	-	✓
LX1910	-	✓
LS580W, LX3240-MR	✓	✓
EV3285 <sup>o</sup> , EV2760 <sup>o</sup> , EV2750 <sup>o</sup>	-	✓
MS236WT <sup>o</sup> , MX315W <sup>o</sup>	-	✓
Cabinet Color	Black (front), silver (rear)	Black
Video Signals	Input Terminals	Digital: HDMI connectors (DVI signals only) x 17, DVI-D x 3 Analog (high speed): 15-pol D-Sub x 3 Analog (standard): 15-pol D-Sub x 3 26 simultaneous visible inputs
	Input Performance	Digital: DVI (single link), 1920 x 1200, 60 Hz (165 MHz pixelclock), non-interlaced Analog (high speed): 1920 x 1200, 60 Hz (170 MHz pixelclock), non-interlaced Analog (standard): 1280 x 1024, 75 Hz (135 MHz pixelclock), non-interlaced
	Output Terminals	DVI-D (dual link) x 2 (via DisplayPort to DVI converter x 2)
	Output Performance	4MP x 2 (1920 x 2160 x 2, 60 Hz) Output format: 8MP (3840 x 2160, 60 Hz)
Operation with Extron Matrix*	Input Terminals	-
	Input Performance	-
	Output Terminals	-
	Output Performance	-
Communication Connector	Ethernet (RJ45)	Ethernet (RJ45)
USB Ports	Upstream	-
	Downstream	-
Power	Power Requirements	AC 100-240 V; 5-2.5 A; 50-60 Hz Redundancy: 2 independent power supplies, hot swap capable
	Power Consumption	340 W (typ.)
OSD Languages	-	English, German, French, Japanese, Chinese
Physical Specification	Net Weight	18 kg (incl. converting modules and Y-cables)
	Mechanical Installation	19" rack design, 4 RU
Degree of Protection	IP20	IP20
Controls and Status	Software control interface for layout, status and diagnosis, LED indicators for power supplies	Graphical user interface and software control interface for operating, status and diagnosis, LED indicators for hardware status x 2
Certifications and Standards (Please contact EIZO for the latest information)	CE, IEC/EN 62368-1, UL/CSA 62368, RCM, RoHS, China RoHS, WEEE	CE/UKCA, IEC/EN60601-1, CAN/CSA-C22.2 No. 60601-1, ANSI/AAMI ES60601-1, IEC/EN 62368-1, CAN/CSA C22.2 No. 62368-1:2014/UL62368:2014, EN55032 Class B, RoHS, WEEE
Supplied Accessories	AC power cord (us, en), converter modules (DisplayPort - DVI) x 2, holder for converter modules, Y-cables x 3, Utility Disk (PDF Instructions for Use)	Adapter cables (HDMI - DVI) x 8, mounting brackets, screws x 2, Utility Disk (PDF Instructions for Use) Extron Matrix: AC power cord (eu) and manual, power cable (jp) 2 m, adapter cable (RS232 - USB) 2 m, installation manual
Dimensions (Unit: mm)		

a) EIZO FlexScan series    b) EIZO RadiForce series    \* Software version 4.0.0 or later

# VIDEO MANAGEMENT OVER IP



**TIPO810 4K**  
IP-Transceiver

Cabinet Color	Silver	
Network	Data Rate	10 Gbit/s
	Connector	SFP+ (10 GbE, optional SFP+ module)
	Cable	LWL duplex LC/LC (SFP+ module necessary)
Video Signale	Input Resolution	Up to 4K (3840 x 2160), 1 x uncompressed, 60 Hz
	Output Resolution	Up to 4K (3840 x 2160), 1 x uncompressed, 60 Hz
	Interface	HDMI (in), HDMI (out)
	Modes	Single In/Single Out (up to 4K/60Hz)
Connectors	Multiview	Side-by-Side, Picture-in-Picture, QuadView
	Audio	Audio jack x 2 (in/out)
	USB Ports	USB/A x 2, USB/B
Control	Mouse and keyboard control	
Power Consumption	17 W, optional: 5 W (for USB), passive cooling	
Power Requirements	External power supply, 230 AC	
Net Weight	1050 g	
Certifications and Standards (Please contact EIZO for the latest information)	CE/UKCA, IEC/EN 62368-1, tested for IEC60601-1-2, RoHS, Reach, WEEE	
Optional Accessories	Optical module (SFP+ 10G LC), power supply, connection and mounting accessories	
Dimensions (Unit: mm)		

# CAMERA SYSTEM



**SC430-PTR 4K**  
4K/60p Surgical Field Camera System

Camera Head	Image Sensor	1/2.5 type CMOS, single chip type
	Effective Pixels	3840 x 2160
	Zoom	Optical 30x motorized zoom
	Focal Length (f=)	4.6 (W)-135 (T) mm
	Horizontal Field of View (HFOV)	68 (W)-2.6 (T) °
	Minimum Object Distance (MOD)	1500 mm (throughout the zoom range) 1000 mm (with close-up lens)
	Filter Diameter	72 mm
	Focus Control	Auto, Manual
	Iris Control	Auto, Manual
	Pan Range	+/-170 °
Features and Functions	Tilt Range	+90 °/-30 °
	Roll Range	+/-165 °
	Pan Speed	8.6-0.05 °/s, 7 steps
	Tilt Speed	8.6-0.05 °/s, 7 steps
	Roll Speed	30-0.2 °/s, 7 steps
	Built-in microphone	Yes
	Image Control	Auto Level Control (ALC), Center Weighting Metering, BT.2020 Emulation, White Balance, Sharpness
	Gain	Auto, Manual (0-45 db)
	Shutter Speed	[59.94 Hz output] 1/60-1/10000 [50 Hz output] 1/50-1/10000
	Picture Flip	Normal, Flip
Video Format	4K UHD	HDMI: 2160/59.94p, 2160/50p SDI: 2160/59.94p, 2160/50p
	FHD	HDMI: 1080/59.94p, 1080/59.94i, 1080/50p, 1080/50i SDI: 1080/59.94p, 1080/59.94i, 1080/50p, 1080/50i
General	Output Terminals	HDMI x 2, BNC (Quad Link 3G-SDI), BNC (3G-SDI), Audio
	Remote Control	LAN, RS-232C, IR remote
	Power Requirements	DC 24 V (bundled AC adapter)
	Maximum Power Consumption	55 W
	Net Weight	Camera Head and Mount: 3.1 kg (with cable cover), Camera Control Unit: 2.9 kg
	Hole Spacing	Camera Mount: 100 x 100 mm
	Operating Temperature	Camera Head and Mount: 0-40°C Camera Control Unit: 0-40°C
	Operating Humidity	20-80%RH
	Certifications & Standards	IEC60601-1, CE, CB, FCC-A, CAN ICES-3 (A), RoHS, WEEE
	Supplied Accessories	AC adapter, AC power cord (2 m), camera cable (25 m), IR remote, rubber feet x 4, ND filter, close-up lens, cable cover, thread-locking fluid, Instructions for Use, Quick Reference Guide
Dimensions (unit: mm)		

SPECIFICATIONS

# RECORDER



**MIR-1**   
 4K Medical Imaging Recorder

Video Recording	Compression	H.264, H.265	
	Format	MP4	
	Resolution	3840 x 2160 max.	
Image Capture	Frame Rate	60 fps, 30 fps	
	Format	JPEG	
Storage	Resolution	3840 x 2160 max.	
	Internal	2TB SSD	
Video Input	External Media	USB HDD, USB SSD	
	Connectors	BNC (12G-SDI), HDMI	
Video Output	Resolution	3840 x 2160 max.	
	Through-Out	BNC (12G-SDI), HDMI	
Audio Input	Monitor-Out	HDMI (1920 x 1080)	
	Line-In	3.5 mm stereo mini jack (for enhancement)	
Audio Output	Mic-In	3.5 mm mini jack (for enhancement)	
	Line-Out	3.5 mm stereo mini jack (for enhancement)	
Other Interfaces	Speaker	Integrated	
	USB	USB 5Gbps: Type-A x 2 (at front for storage) USB 2.0: Type-A x 4 (at rear for operation)	
	LAN	RJ-45 x 2 100BASE-TX, 1000BASE-T (for enhancement)	
	Serial Interface	RS-232C	
	Trigger Input	3.5 mm stereo mini jack x 2	
Power Input	Touch Panel	5" color LCD, analog resistive	
Net Weight	AC100-240 V, 50 / 60 Hz		
Installation	Approx. 4.0 kg		
Environmental Requirements	Flat, rack mounting holes: M4 x 3 on both sides		
	Operating	Temperature: 0-40 °C, Humidity: 20-80 % (R.H., non condensing)	
Certifications & Standards <small>(Please contact EIZO for the latest information)</small>	Storage	Temperature: -20-60 °C, Humidity: 10-90 % (R.H., non condensing)	
	CE/UKCA (Medical Device), ANSI/AAMI ES60601-1, CAN/CSA-C22.2 No. 60601-1, IEC/EN60601-1, VCCI-B, FCC-B, CAN ICES-3(B), RoHS, China RoHS, WEEE, CCC		
FDA	Class I		
Supplied Accessories <small>(May vary by country. Please contact EIZO for details)</small>	AC power cord, HDMI cable, clamper for HDMI cable x 3, instructions for use		
Dimensions (unit: mm)			

# SIGNAL ROUTING



**PDC0100**   
 Analog-DVI Converter



**PDS0800-HD**   
 DVI Splitter / Scaler



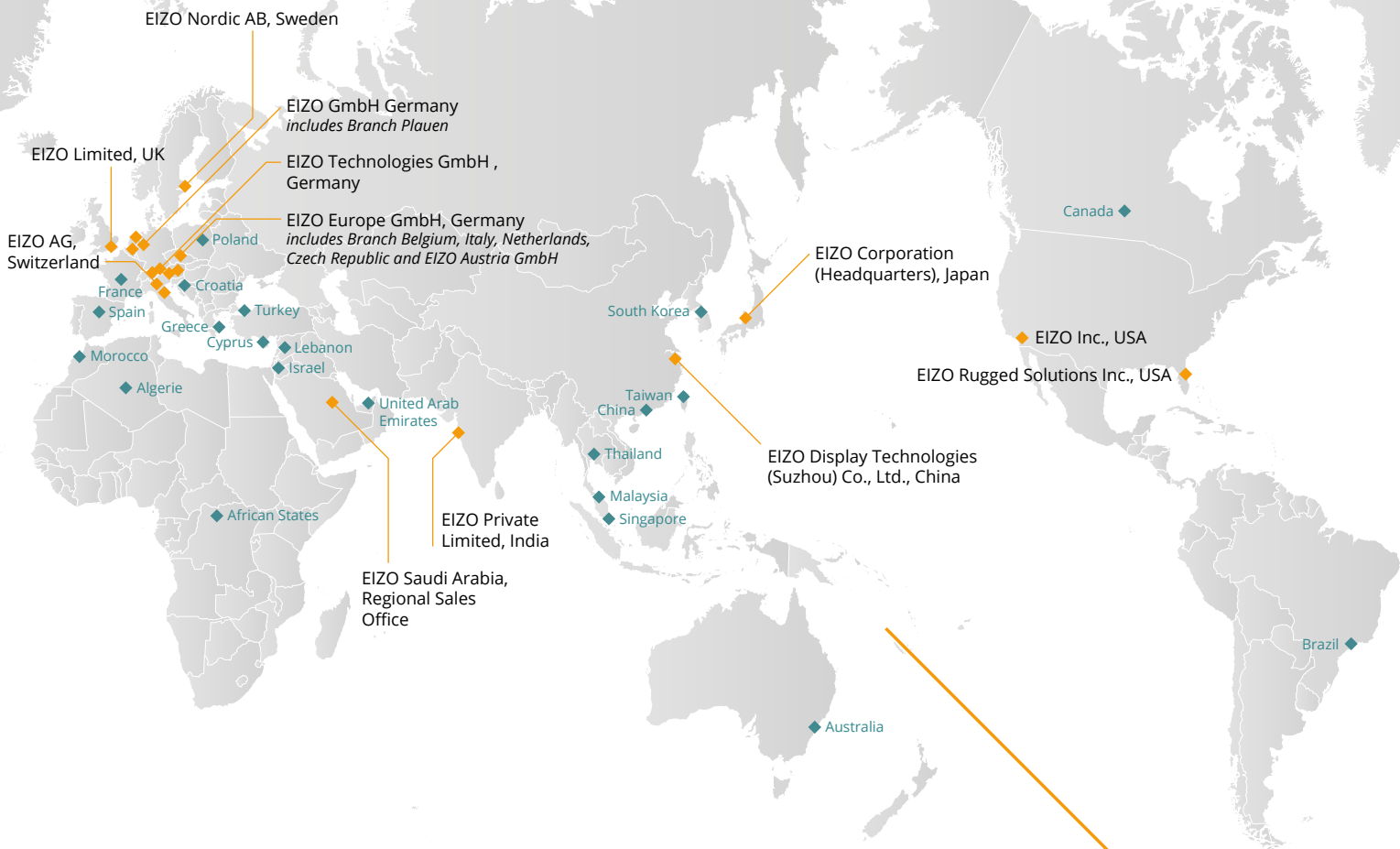
**TDL3600 / TDL2300**   
 DVI Transmission Link

Model Variations	-	-	TDL3600-QL: quad link, 36m TDL3600-DL: dual link, 36m TDL3600-SL: single link, 36m TDL2300-SL: single link, 23m
Cabinet Color	Black	Light Gray	Silver
Input Terminals	DVI-I (digital: DVI, analog: RGB), D-Sub mini 15 pin (Separate, Composite, SoG), BNC (Composite, PAL, NTSC), 4 pin mini DIN (S-Video)	DVI-D (dual link) x 2 (A+B)	TDL3600-QL: DVI-D (dual link) x 2 TDL3600-DL: DVI-D (dual link) TDL3600-SL: DVI-D
Input Performance	Digital: DVI-D (single link), max. 1600 x 1200, 60 Hz, Analog: VGA, SVGA, XGA, SXGA, UXGA, PAL, NTSC, Scanning Frequency: Analog 30-100 kHz, 50-100 Hz	8MP (4096 x 2160: 2048 x 2160 x 2 channel, 60 Hz), 8MP (UHD, 3840 x 2160: 1920 x 2160 x 2 channel, 60 Hz)	TDL3600-QL: 3840 x 2160 TDL3600-DL: 2560 x 1600 TDL3600-SL/TDL2300-SL: 1920 x 1200
Output Terminals	DVI-D	DVI-D (Dual Link) x 4 (A+B x 2), DVI-D (single link), mini DIN (YPbPr)	TDL3600-QL: DVI-D (dual link) x 2 TDL3600-DL: DVI-D (dual link) TDL3600-SL/TDL2300-SL: DVI-D
Output Performance	1280 x 1024 (SXGA), 60 Hz	8MP (4096 x 2160: 2048 x 2160 x 2, 60 Hz) 8MP (3840 x 2160: 1920 x 2160 x 2, 60 Hz) Downscale-output (with UHD input resolution only): FHD (1920 x 1080, 60 Hz) Analog/Composite (1920 x 1080, 60 Hz)	TDL3600-QL: 3840 x 2160 TDL3600-DL: 2560 x 1600 TDL3600-SL/TDL2300-SL: 1920 x 1200
Connector	RJ11 x 2 (Upstream, Downstream), Supported Signal: RS 232-Bus	-	-
Configuration	-	-	-
Power Requirements	AC 100-120 V, 200-240 V: 50 / 60 Hz	AC 100-240 V: 50 / 60 Hz	PC side: through DVI interface Monitor side: 5 V support from monitor Optional: 5 V external power supply
Power Consumption	10 W	36 W	-
Degree of Protection	IP20	IP20	IP20
Net Weight	850 g	1.1 kg	0.1 kg (each transmitter and receiver, without cable)
Mechanical Installation	Injection nut M3 on each side (distance 31.8 mm) x 2	19" rack design, 1 RU	Transmitter module at PC side (DVI-D - RJ45), TDL cable (RJ45 - RJ45), Receiver module at monitor side (RJ45 - DVI-D)
Certifications and Standards <small>(Please contact EIZO for the latest information.)</small>	CE, IEC/EN 62368-1, UL/CSA 62368-1 (cMEL-Tus), EN60601-1-2 Class B, FCC-A, RoHS, RCM, China RoHS, WEEE	CE, IEC/EN 62368-1, EN55032, EN55024, FCC-A, RoHS, WEEE adapter: CE, IEC/EN 62368-1	CE, IEC/EN60601-1, CAN/CSA C22.2 No. 60601-1-08, ANSI/AAMI ES60601-1:2005, EN60601-1-2 Class B, FCC-A, RCM, RoHS, China RoHS, WEEE
Supplied Accessories	AC adapter, signal cable (VGA - VGA, DVI - DVI), remote key pad with 30 m cable, Utility Disk (PDF Instructions for Use)	Adapter mini DIN to 3 x cinch, AC adapter	TDL3600-QL: Transmitter x 2, Receiver x 2, mounting set for L5580W/L580W, mounting set for LMM56800/LMM0802, 36 m cable x 4, TDL3600-DL: Transmitter, Receiver, 36 m cable x 2, AC adapter, TDL3600-SL: Transmitter, Receiver, 36 m cable, adapter, TDL2300-SL: Transmitter, Receiver, 23 m cable, adapter, Utility Disk (PDF Instructions for Use)
Dimensions (unit: mm)			

SPECIFICATIONS

◆ EIZO Location

◆ EIZO Dealer Network



### Local Contacts

You will find your EIZO contact partners at:  
<https://www.eizo-or.com/contact>

### Contact for OEM customers

EIZO GmbH	Tel: +49 7272 9850-0
Carl-Benz-Str. 3	Fax: +49 7272 9850-471
76761 Rülzheim	E-Mail: <a href="mailto:dt-contact@eizo.com">dt-contact@eizo.com</a>
Germany	Web: <a href="https://www.eizo-or.com">https://www.eizo-or.com</a>

EIZO, the EIZO Logo, Curator, RadiForce and FlexScan are registered trademarks of EIZO Corporation. DisplayPort, the DisplayPort Compliance Logo and VESA are trademarks of the Video Electronics Standards Association in the United States and other countries. DICOM is the registered trademark of the National Electrical Manufacturers Association for its standards publications relating to digital communications of medical information. The terms HDMI, HDMI High-Definition Multimedia Interface, HDMI trade dress and the HDMI Logos are trademarks or registered trademarks of HDMI Licensing Administrator, Inc. Intel or Intel Core are trademarks of Intel Corporation in the U.S. and/or other countries. Windows is a registered trademark of Microsoft Corporation in the United States and other countries. All other company names, product names, and logos are trademarks or registered trademarks of their respective owners. Copyright © 2023 EIZO GmbH. All rights reserved (10/23)